



ACE events

YOUR VENUE IN THE EU QUARTER

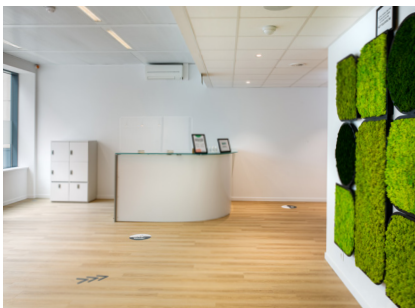


WELCOME TO ACE EVENTS

Our newly renovated venue is at the doorstep of the EU Institutions. It has a multipurpose conference hall of 233 m² that can accommodate up to 220 guests. There is convenient access to taxis and all forms of public transport.



This is the perfect location to hold conferences, cocktails, meetings, team building activities and more.



The lobby has a welcoming reception or registration zone with many branding opportunities.



The lunch and cocktail area has a fully equipped kitchen and bar for flexible dining and networking.



Our small meeting room can be a private office for VIPs or hold up to six guests for private meetings.

*Just 2 minutes from
Schuman station!*



FLEXIBLE SETUP



NATURAL LIGHT



**NEW
AV SYSTEM**



The conference hall has all the space, equipment and connectivity that you could need.

Our friendly and experienced staff is here to answer every question



OUR SERVICES

Services that are always included

- ^ guided visit to the venue
- ^ high-speed wifi and cable internet
- ^ measures to protect you and your guests from COVID-19
- ^ modular and impactful reception area
- ^ on-site general assistance during the event
- ^ locker storage for valuable materials
- ^ lounge area for lunch
- ^ marketing material storage
- ^ coat racks and hangers
- ^ water and glasses
- ^ cleaning

Services à la carte



- ^ fully customised and flexible room set-up to meet your needs
- ^ furniture for your event (tables, chairs, etc)
- ^ state-of-the-art audio-visual equipment and recording options
- ^ live streaming
- ^ a variety of microphone options, including wireless, handheld and catchbox
- ^ options for catering, translation, etc.
- ^ mobile widescreen TV, perfect for branding opportunities

CAPACITY

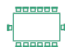
Conference hall

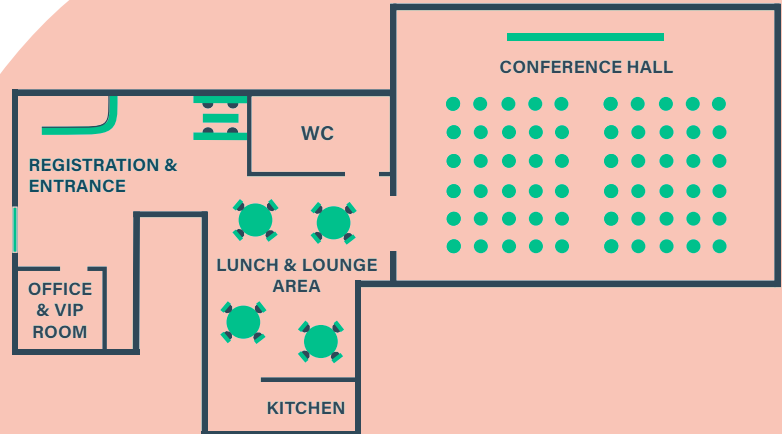
- | | | | | | | | |
|--|----------------|---|--------------------|---|----------------|---|---------------|
|  | Theatre - 80 |  | Amphitheatre - 110 |  | Boardroom - 62 |  | Banquet - 105 |
|  | Classroom - 96 |  | U-shape - 96 |  | Cocktail - 180 |  | Cabaret - 66 |

Lounge and reception

- | | |
|--|----------------------|
|  | Cocktail - 40 people |
|  | Banquet - 20 people |

Small meeting room

- | | |
|---|----------------------|
|  | Boardroom - 6 people |
|---|----------------------|



COVID- 19 MEASURES

We are adapting to the COVID-19 outbreak and have implemented these measures to keep our clients and guests safe.



Social distancing

- ^ in-person attendees limited
- ^ clear visitor flow through the venue with separate entrances and exits
- ^ safe distance indicators in reception zone, lounge, conference and VIP room
- ^ individual tables in the conference hall



À la carte service

- ^ flexible set up to ensure that in-person guests are safely socially distanced
- ^ live streaming audio and video recording to share with people that cannot attend in-person
- ^ interactive setup that accommodates both remote and in-person attendees



*70% of the air
refreshed each hour,
reducing the spread
of germs*



Hybrid events

- ^ maximum access while respecting social distancing
- ^ intimate setting for the in-person attendees
- ^ maximum engagement for remote attendees



Hygiene above all

- ^ hand sanitiser stations throughout the venue
- ^ masks available upon request
- ^ all surfaces and equipment cleaned after each use
- ^ touchless soap dispensers
- ^ signs on hygiene measures

OUR PARTNERS

We work with local caterers that have a sustainable mindset.

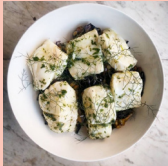


Short supply chains and local artisanal products, which inspire the menus.

ALIMENTATION

Light and tasty dishes, prepared with local and seasonal products.

Yum!



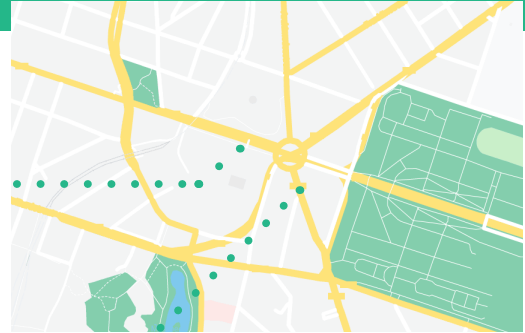
ACCESS



**TRAIN AND METRO STATION
SCHUMAN 1 5**



**AVENUE D'AUDERGHEM 22
B-1040 BRUSSELS**



Contact us!

 +32 (0)2 893 33 68

 hello@acevents.eu



acevents.eu



Cover photo credit: European Union, 2021